

SID	11	16	29	34	Init	LoA
ADAMA ASPIB	1A	1B	2C 2C	1D	50	190
ARSIN EWUKE	1A	1B	1C 1C	1D 1D	50	230
BUWUT UMSUM	1A	1B	1C 3C	1D	50	240
KOXER AGMIM	1A	1B	1C 2C	1D	50	150
LANUX UNGUT	3A	5B	2C 2C	6D	50	240
LEDVA VABGU	3A	2B	3C 2C	4D	50	240
LUGEM OSMOD	1A 1A	2B	1C 2C	1D 2D	50	240
MEDIX OTGAR	1A	2B	1C 2C	1D 2D	50	240
OSPEN IMVOB	2A 3A	5B	4C 3C	3D 2D	50	240
RUPET IRGOT	1A 1A	2B	2C 2C	2D 2D	50	240
SNU	2A	4B	2C	2D	50	-
SOVIL ODSUD	1A 1A	2B	1C 2C	1D 2D	50	240
STEIN EMKOG	2A	4B	3C 3C	3D 3D	50	230

SIDs (noise abatement 2100-0700 local time)

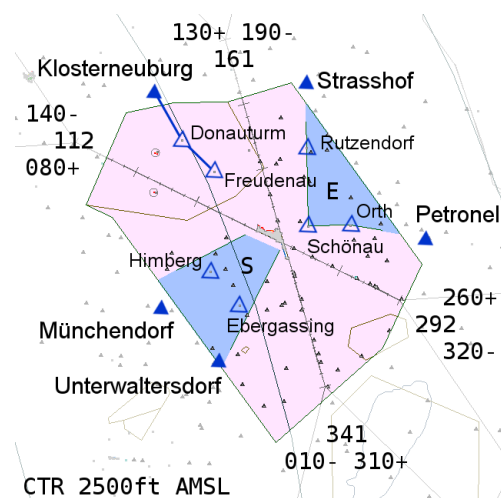
STAR	Endpoint	LoA
VENEN 3W BUDEX 2W MASUR 3W LANUX 7W	NERDU	MASUR FL170- MASUR FL170- MASUR FL170- LANUX FL150-
MIKOV 8W REKLU 3W TOVKA 3W	MABOD	MIKOV FL170- REKLU FL180- TOVKA FL160-
NATEX 2W	PESAT	NATEX FL140-
NEMAL 2W BARUG 2W	BALAD	BARUG FL170- BARUG FL170-
NIGSI 2W ABTAN 2W LANPA 2W OBUTI 2W	BALAD	all NIGSI FL180-

RNAV Transitions

Fix	11	16	29	34	RefAlt
NERDU	5K	7L	5M / 1U	5N	6000
MABOD	5K	7L	6M / 1U	5N	6000
PESAT	5K	6L	4M / 1U	5N	6000
BALAD	4K	6L	4M / 1U	4N	8000

Intercept Altitudes

ILS 11	5.000ft	D13.0	0EW	ILS
ILS 16	5.000ft	D13.3	0EZ	ILS
ILS 29	3.000ft	D 7.5	0EX	ILS
ILS 34	3.000ft	D 7.4	0EN	ILS



CTR 2500ft	Frequencies	Event Positions	Holdings	Holdings 2
TA: 10.000ft	LOWW_DEL 122.125	LOWW_W_GND 121.600	NERDU 6000ft RT 103°	FMD 5000ft LT 160°
QNH:	LOWW_GND 121.600	LOWW_E_GND 121.775	MABOD 6000ft RT 163°	BUCKU 3000ft LT 291°
- 977 FL130	LOWW_TWR 119.400	LOWW_W_TWR 119.400	PESAT 6000ft LT 269°	WGM 5000ft LT 160°
978-1013 FL120	LOWW_APP 134.675	LOWW_E_TWR 123.800	BALAD 8000ft RT 034°	
1014-1050 FL110	LOVV_CTR 134.350	LOWW_N_APP 125.175	MASUR FL130 RT 090°	
1051- FL100	LOVV_N_CTR 134.350	LOWW_S_APP 134.675	NIGSI 10000ft RT 014°	
	LOVV_S_CTR 133.800	LOWW_D_APP 119.800	BARUG FL130 RT 086°	